

IL  
CUORE  
VERDE  
NEW CAPITAL



Designed and Developed by

ARCHPLAN

ARCHPLAN  
DEVELOPMENTS



ARCHPLAN  
CONSULTING

# Developed by **ARCHPLAN**

---

Archplan Developments is a promising Real Estate developer and sister company of Archplan architectural designer and urban planner one of the most outstanding companies in that field in the Middle East and Africa.

Archplan founded in 1985 by prof. Ayman Ashour, professor of Architecture and Urban planning Ain - Shams University.

It has expanded in collaboration with international experts and firms from (England- Italy - Portugal- Denmark and Germany) to develop Mega Scale projects through 5 branches in Egypt, England, Sultanate of Oman, United Arab of Emirates and Morocco.

**ARCHPLAN**  
D E V E L O P M E N T S



**ARCHPLAN**  
C O N S U L T I N G



# CEO'S MESSAGE

It is time for dreams come true!

We aim at implementing our distinctive vision through planning and constructing memorable landmarks and role model projects that reflect civilization as well as architectural values.

Moreover, we are intent to leave a deep imprint on the real estate industry as we have left a profound imprint on the urban planning domain via nearly 1000 projects along 40 years of experience.

Employing the latest technology in architecture and collaborating with international experts preside our agenda.



Dr. Shady Elzieny



Eng. Ahmed Ashour

# COO'S MESSAGE

Designing and planning numerous national mega projects, Archplan has prodigiously contributed to Egypt's new republic on the architectural, industrial, technological, and social levels. Currently, such highly reputable firm is planning and constructing iconic buildings in the New Administrative Capital to render it a competent futuristic city.

# OUR VALUES

---

## **knowledge:**

We strive to understand our markets and our clients' needs.

## **Connected:**

Relationships are everything to us; we connect people to their homes and to their communities.

## **Passion:**

We believe that working with “all heart” can change the world.

## **Playful:**

We love what we do, and it shows. Our clients' needs, and best interests are at the heart of everything we do.

## **Effectiveness:**

We set a high bar and move mountains to exceed expectations.







THE CAPITAL

MEDIA HOUSE





**1000+**  
Projects

**205+**  
Professional

**5+**  
Branches

**40+**  
Years Of  
Experience

**6+**  
Professional  
Partners





## Our Achievements

Among more than **1000** prominent projects all over the world, Archplan takes pride in having a vital role in the urban planning of the formidable national project, The New Capital City. Besides more new promising Egyptian cities and projects that will be able to change the substance of the urban development in Egypt





A modern city skyline at dusk, featuring several tall skyscrapers with illuminated facades. In the foreground, there is a large fountain with water spraying upwards, and a body of water reflecting the city lights. The sky is a deep blue with some light clouds.

# 5+ UDC

We are proud to be one of the 5+ UDC  
Who made the strategic planning of the  
New Administrative Capital City!

Experts united for a better future  
(Archplan . CUBE . LAND . ÖKOPLAN . CONCEPT)

UDC is a consortium of 5 Egyptian engineering firms that have come together to tackle large-scale projects with innovation and experience in more than 1,400,000 sqm of projects built-up areas such as October Oasis, National Theater Renovation Vortex Dubai Gateway and The Crystal Tower.







# THE NEW CAPITAL







We take pride to be the consultant who made the  
detailed and architectural planning

# Of The Downtown





# NEW CAPITAL TRANSPORTATION HUB

New Administrative capital





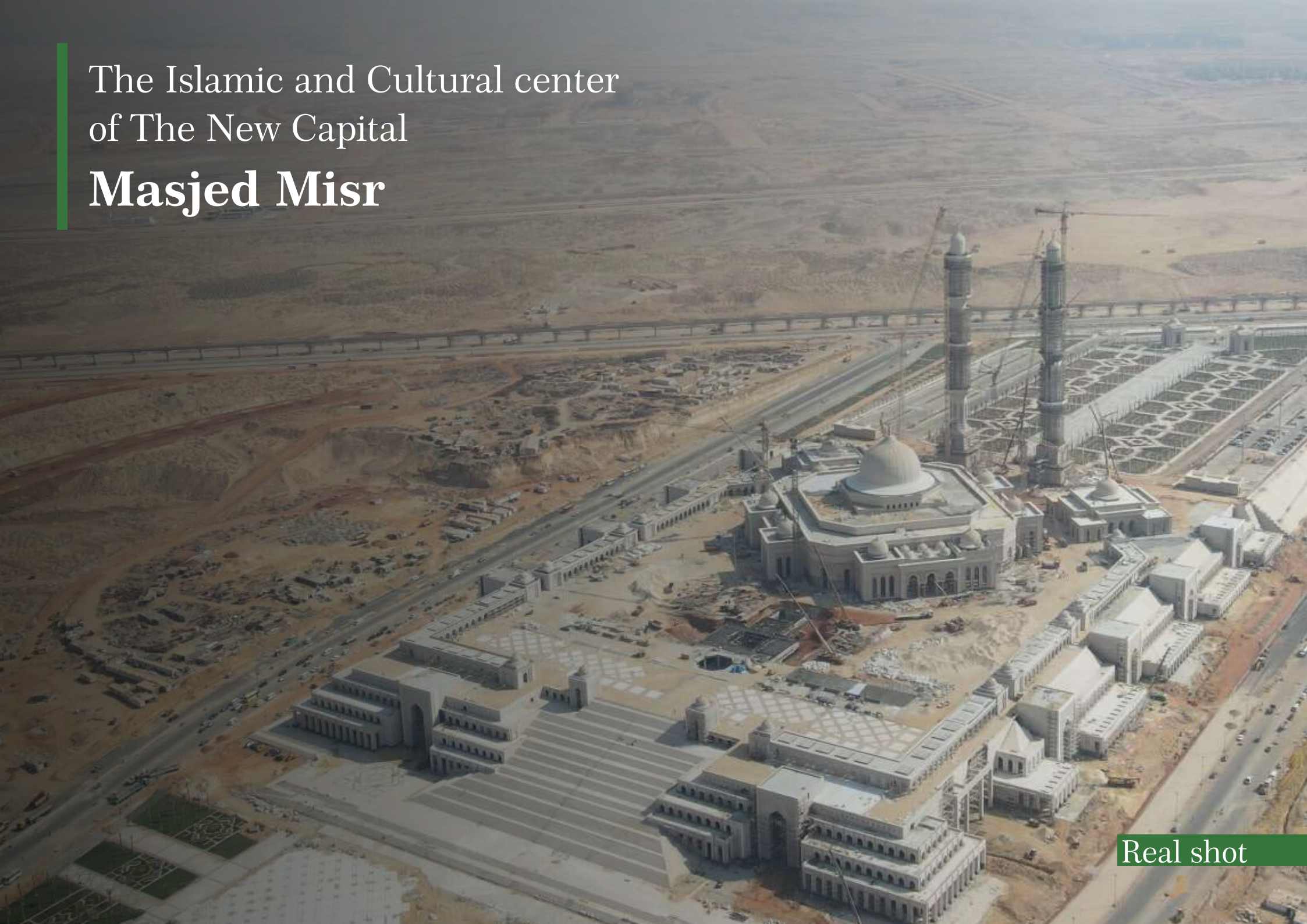
# Media City

New Administrative capital





The Islamic and Cultural center  
of The New Capital  
**Masjed Misr**



Real shot



An aerial photograph of a modern residential district. The image shows a long, straight central corridor with a light-colored paved surface and a central green space containing several circular lawns and young trees. On either side of the corridor are multi-story residential buildings with a mix of beige and white facades. The buildings have balconies and air conditioning units. In the foreground, there are some metal structures, possibly for a playground or sports area. The background shows a dense urban landscape with many more buildings under a clear sky.

The residential  
**district R3**

Real shot

**Welcome to  
the New Capital**

---

IL  
**CUORE  
VERDE**  
NEW CAPITAL





IL  
CUORE  
VERDE  
NEW CAPITAL



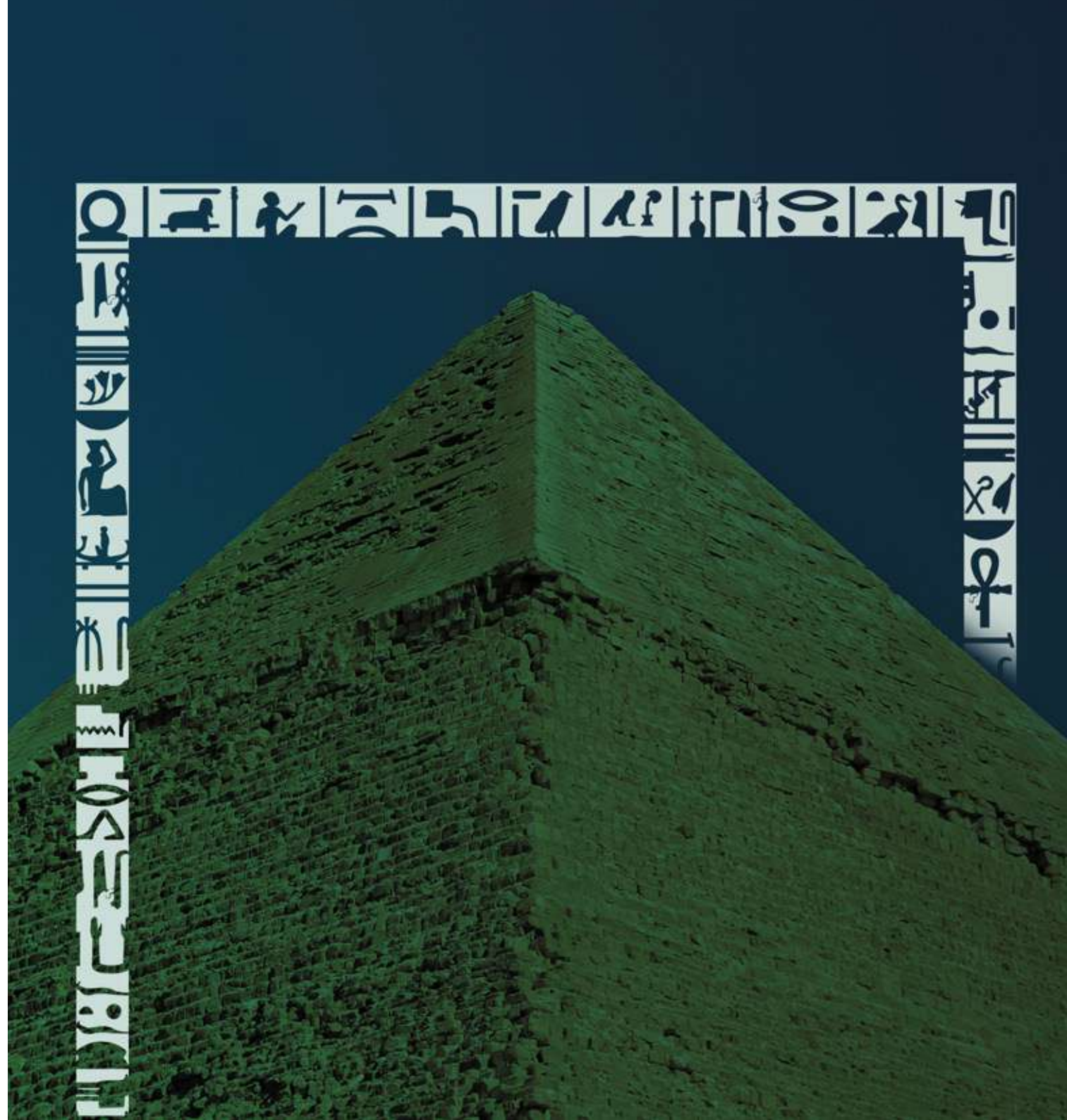
## IL CUORE VERDE

**IL Cuore Verde** is a Business complex perfectly located in the promising Business District. In location promotes prosperity and design promotes productivity and creativity.

### **Inspired by the Ancient Egyptian architecture**

Our vision is enchanted by the Ancient Egyptian architecture ,the ancient temples, the glory, and the civilization of our ancestors!

---





## Green Architecture concept is the future

---

Green It's not only about reducing energy use and ensuring long-term operational costs for our clients! It's about promoting a healthy lifestyle for generations, an atmosphere that boosts creativity.



# Green is the future



**IL Cuore Verde** is a project that takes the green building to the next level! We are aiming to build a role model when it comes to Green and sustainable buildings in the New Capital city. That's why we are committed to the standard of Green Sustainable buildings





- **Life cycle assessment**
- **Location and structure**
- **Design efficiency**
- **Indoor environmental**
- **Quality enhancement.**
- **Operation & Maintenance Optimization**
- **Energy waste**
- **Water efficiency**
- **Material efficiency**
- **Waste reduction**







## Who designed IL Cuore Verde?

The Italian architect **Stefano Boeri**, the world-renowned architect specialized in innovative eco-architecture. His name ranked on the top of the architects of Green buildings after creating the concept of Vertical Forest and designing the most outstanding green building in the world.





---

# Stefano Boeri previous project.

Bosco Verticale, Milano (2014), Boeri Studio  
Ca' delle Alzaie, Stefano Boeri Architetti,  
Treviso (2021)



An aerial photograph of a modern architectural complex. The building features a central courtyard filled with lush green trees and vegetation. The building's facade is composed of large glass panels, reflecting the surrounding environment. The overall design is sustainable and integrates nature into the urban space.

# Our Concept

Our Italian brand name IL Cuore Verde, which means the green heart, is inspired by our Architectural design! A central forest in the heart of our modern and sustainable building.



# The New Capital city

The New Capital city is expected to be the largest financial ecosystem in Africa and the Middle East encompassing 6 million inhabitants and professionals from different nationalities. We are committed to putting forward this national dream of Egypt that is too soon turning to reality with the transition of the Egyptian government within the upcoming months.



# The financial district

---

What a perfect place for your future business more than a place where the Central Bank of Egypt, the governmental district, the presidential palace and the famed Masa Hotel? **The Financial District** is one of the most promising investment areas in the New Capital city!





# Prime Location

---

Alongside a very strategic location of the Central Park of the financial district, and overlooking the Central Bank Square. Here we choose an unrepeatable location for our clients!

Conveniently situated within walking distance of all the commercial areas; cafes, restaurants, shopping are easily accessible and few minutes from the main transportation hub.

- 1 minute from The governmental district
- 2 minutes from the presidential palace
- 3 minutes from El Masa hotel
- 4 minutes from Bin Zayed Axis

الحى الحكومي

مسجد مصر

المونوريل

داون تاون

المحور المركزي 90m







منطقة الأعمال المركزية  
CBD

البرج  
الأيقوني

مدينة الفنون والثقافة

مدينه الماسه

LRT القطار الكهربائي

المحطة التبادلية  
للعاصمة الإدارية

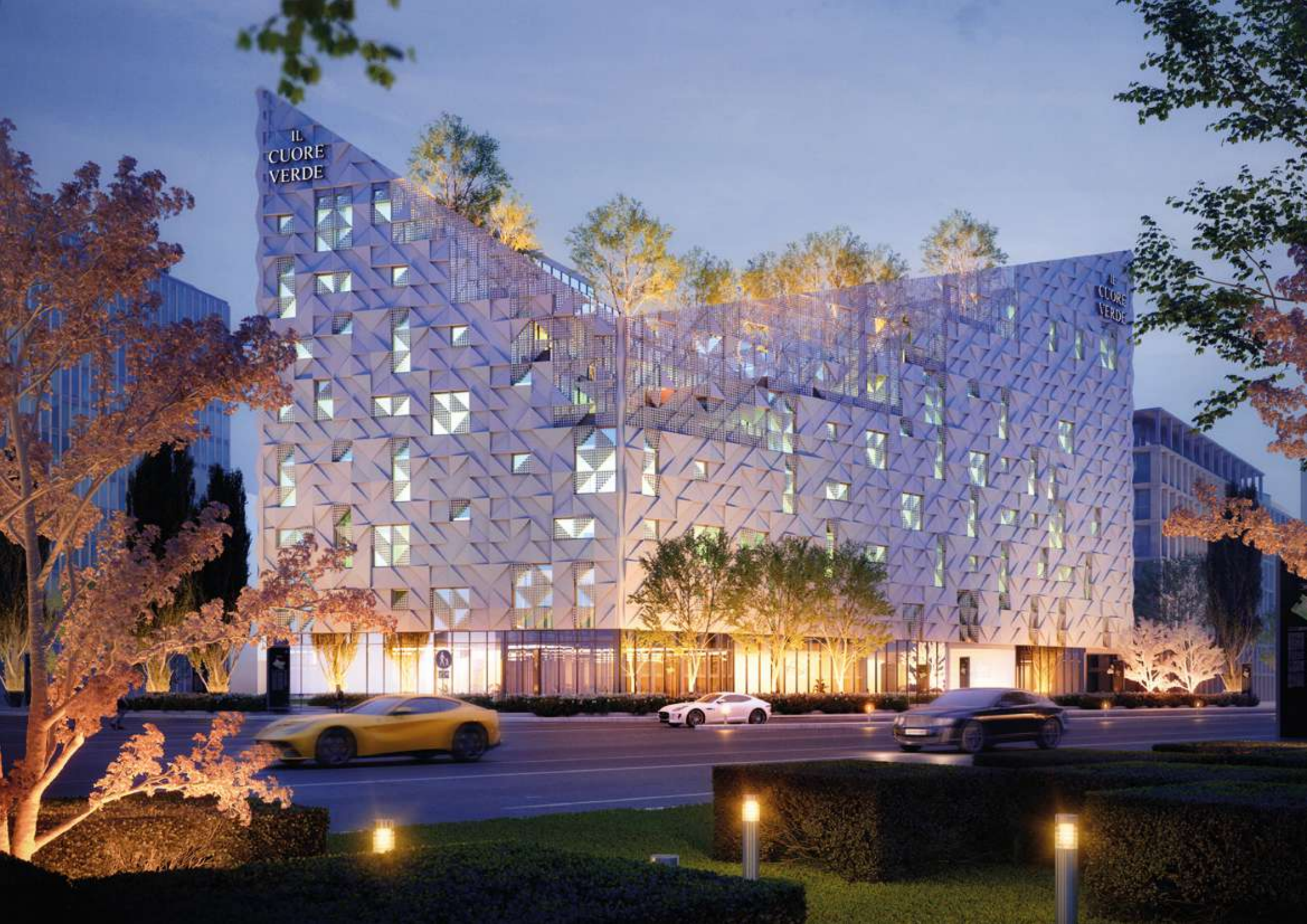


مسااحات  
خضراء

مسااحات  
خضراء

مسااحات  
خضراء





IL  
CUORE  
VERDE

IL  
CUORE  
VERDE





IL  
CUORE  
VERDE









# Future-proof work environment

---

The Innovative and smart interior design of the offices and the soothing green outdoor areas satisfy you with an exceptional work environment that promotes creativity and productivity.) instead of the current one.





# Banks area

---

Within a prestigious Business complex offering international standards of facilities and a sustainable atmosphere, we dedicated the first floor to be a banks area with various spaces for all the banks that want to have their foot in that promising financial district







IL  
CUORE  
VERDE



# Interior Designs





# Interior Designs





# Interior Designs





# Unprecedented Facilities and amenities



Day lighted  
Plaza



Air Filtration  
System



Rainwater  
Collection



Thermal  
Control Glass



Storage Area



Solar System



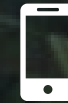
4 Elevators



First Aid



Information  
Desk



Smartphone App



Security



Fire Fighting  
System



Access  
Control



Green Court



Parking



High Speed  
Fiber Optics



Electric Veichle  
Charger



CCTV



2 Main Entrance  
(Lobby)



Central A/C



# Smart Building





# Green Architecture



# Shared Meeting Rooms





# Corte Verde (Green Court)





Terraces



Accessible for everyone



Four Elevators



Echo friendly  
Building





# ARCHPLAN

D E V E L O P M E N T S



[developments@archplan-eg.com](mailto:developments@archplan-eg.com)



Headquarter: Block 4, 1160 square Sheraton El Matar,  
Cairo Governorate, Egypt



15450



THANK YOU

---





IL  
CUORE  
VERDE

NEW CAPITAL